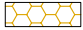
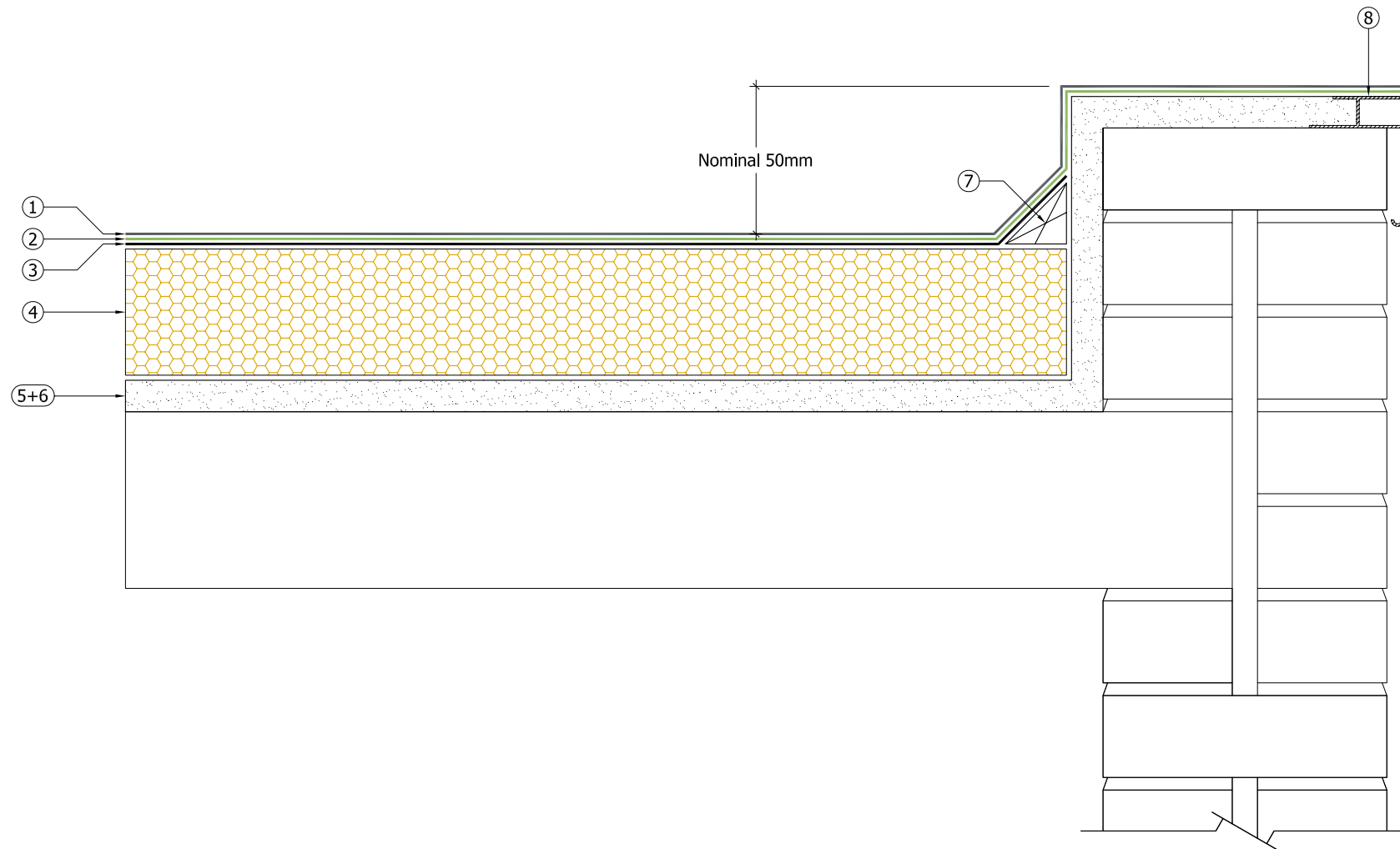


**Key**

- ① — Decaflex Top Coat applied in strict accordance with Sika Liquid Plastics Project Specification
- ② — Decaflex Embedment Coat applied at correct coverage rate for the substrate surface conditions embedded with Sika Reemat Premium GFM
- ③ — Sika Liquid Plastics Carrier Membrane SA applied in strict accordance with Sika Liquid Plastics Specification
- ④  Decotherm insulation bonded in strict accordance with Sika Liquid Plastics Project Specification
- ⑤+⑥ Existing substrate used as vapour control layer; prepared in strict accordance with Sika Liquid Plastics Project Specification
- ⑦ Tanalised timber fillets [as required] bonded with Decostik SP
- ⑧ Typical parapet detail with existing trim primed with Sika Liquid Plastics Metal Primer; Bond Break details applied to all joints. Fully reinforced Decaflex Waterproofing System terminated on the external drip edge



Sika Liquid Plastics  
 Sika House  
 Miller Street  
 Preston  
 Lancashire PR1 1EA  
 Telephone: 01772 259781  
 Email: [technical.customer.services@uk.sika.com](mailto:technical.customer.services@uk.sika.com)  
 Web: [www.liquidplastics.co.uk](http://www.liquidplastics.co.uk)

This drawing is solely intended to illustrate the correct application of Sika Liquid Plastics products and systems, it must be read in conjunction with the appropriate specification and current issue of relevant Product Data Sheets. All elements bearing reference to structural and/or thermal design are shown indicatively and should not be used in whole or in part for any aspect of project design without consulting the relevant authorities.

For refurbishment projects, all aspects of the existing roof are deemed to be fully compliant with BS 6229:2003 [Code of Practice for Flat Roofs with Continuously Supported Coverings] or improved upon for instances where these standards are not met.

Site-specific details not covered by our standard range can be obtained by providing relevant information to the email address shown.

Project No:

DWG No: Revision

Project:

Drawing Title:  
 Built Up Roof Termination detail to  
 an existing parapet trim

Scale: NTS @ A3 Drawn:

Date:

